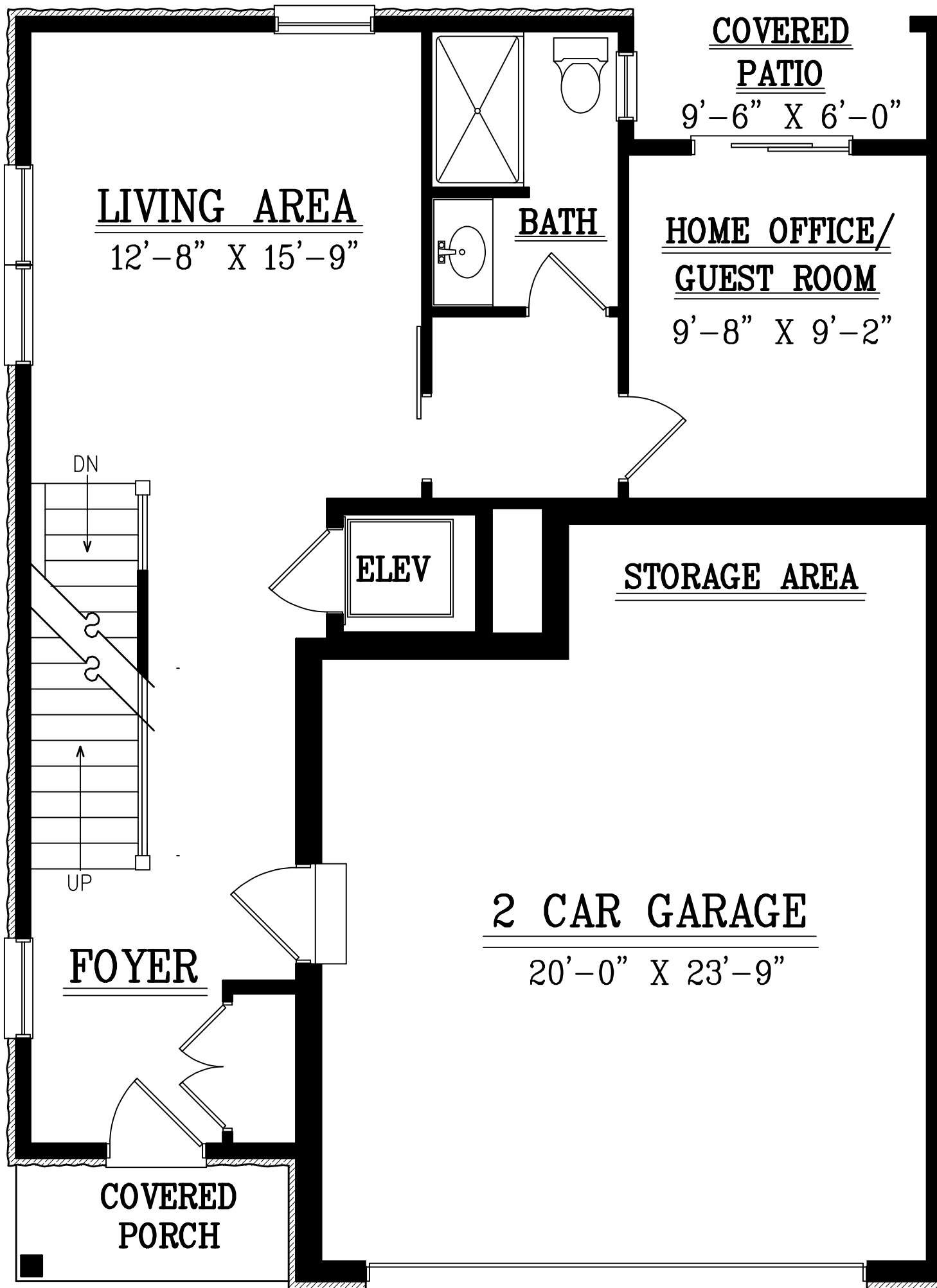




FRONT ELEVATION — LOT #3

---

---



## GRADE FLOOR PLAN – LOT #3

GRADE FLOOR : 670 SQ.FT.

LIVING FLOOR : 1,138 SQ.FT.

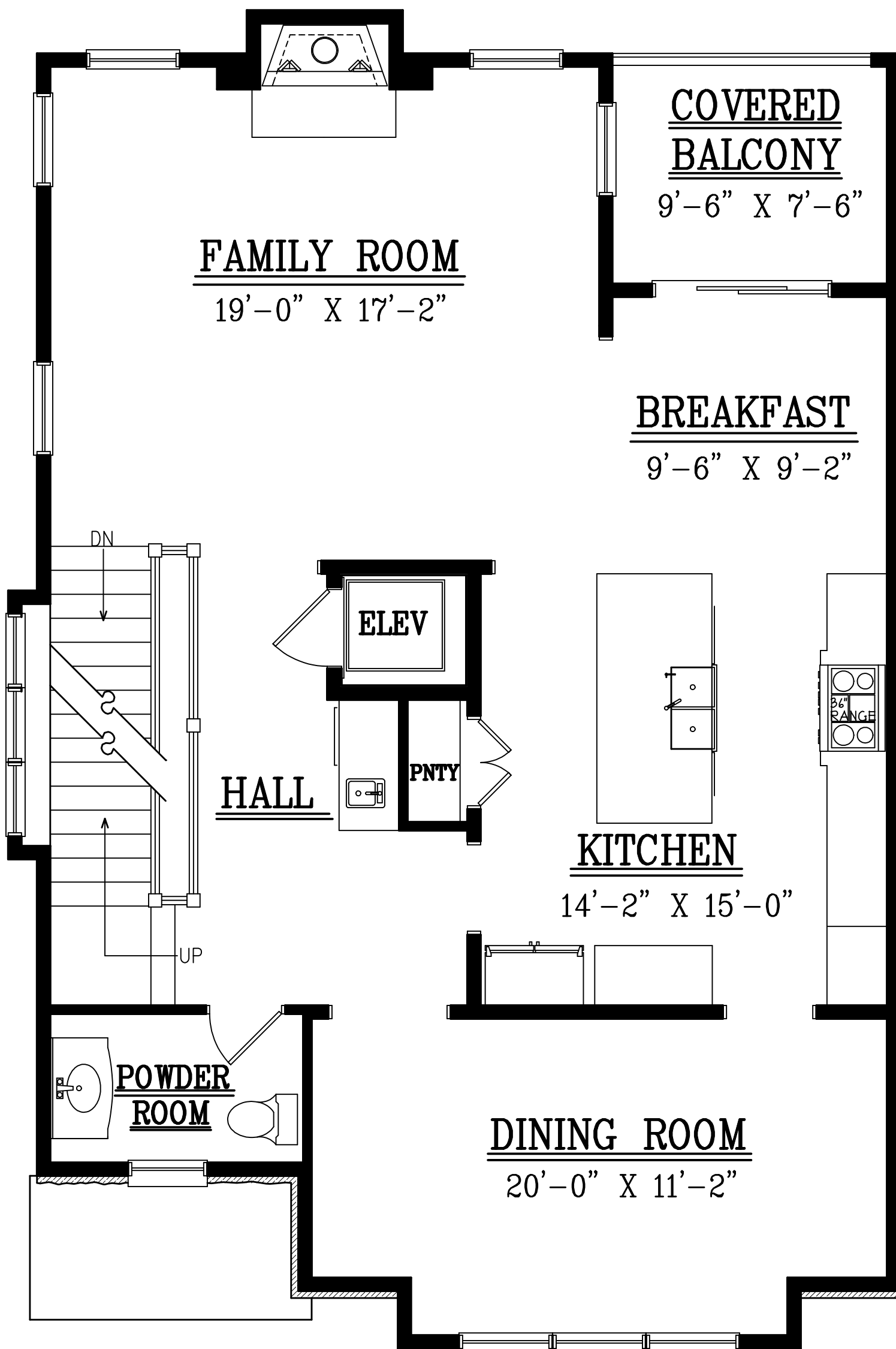
BEDROOM FLOOR : 1,186 SQ.FT.

LOFT FLOOR : +681 SQ.FT.

TOTAL LIVING: 2,994 SQ.FT.

TOTAL LIVING W/ LOFT: 3,675 SQ.FT.

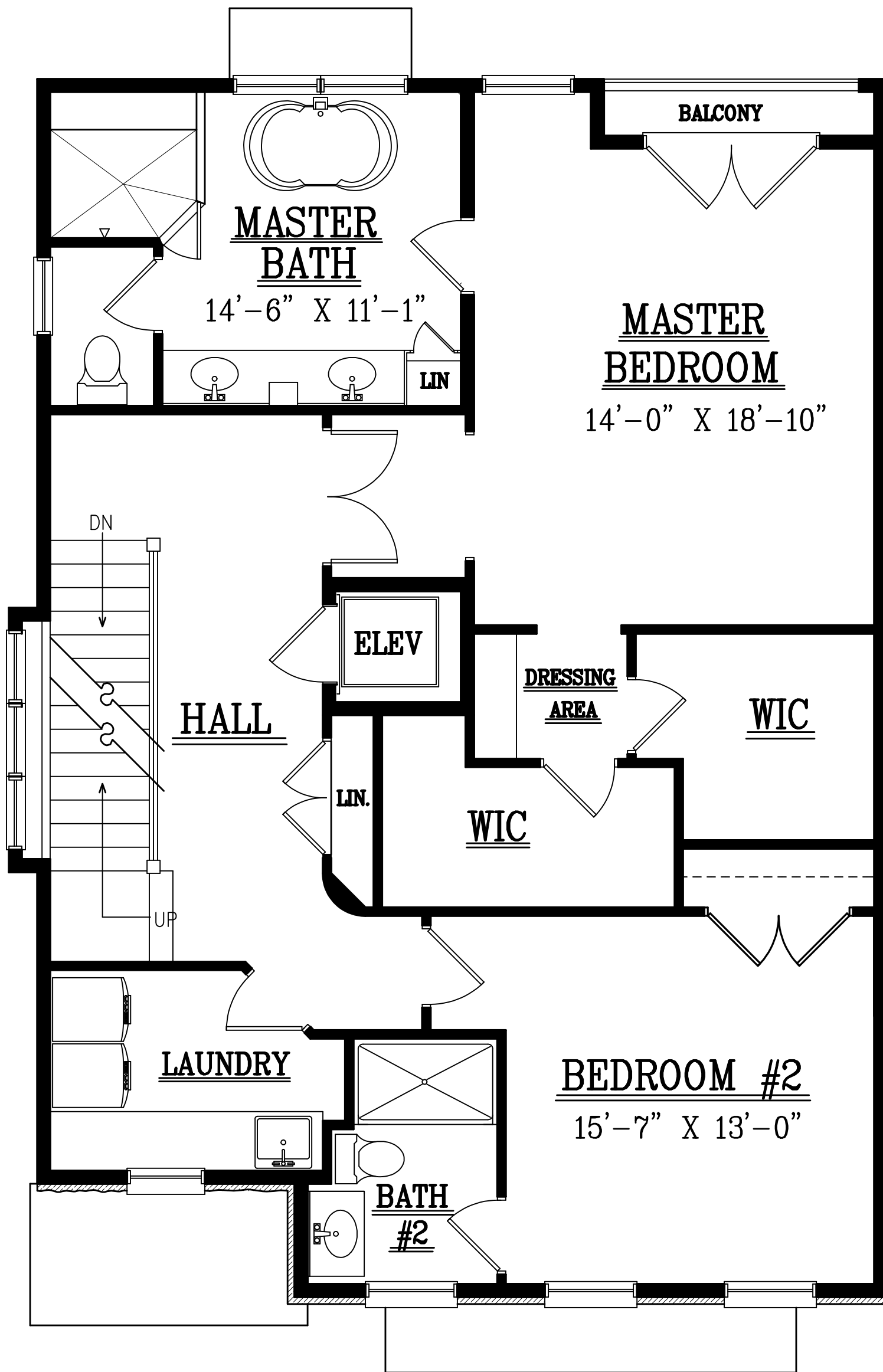
FLOOR PLANS AND DIMENSIONS ARE APPROXIMATE AND SUBJECT TO CHANGE WITHOUT NOTICE. FLOOR PLANS MAY ILLUSTRATE OPTIONAL FEATURES. WINDOW LOCATIONS AND STYLES VARY ACCORDING TO ELEVATION. PLEASE SEE SALES CONSULTANT FOR DETAILS.



## LIVING FLOOR PLAN – LOT #3

LIVING FLOOR : 1,138 SQ.FT.

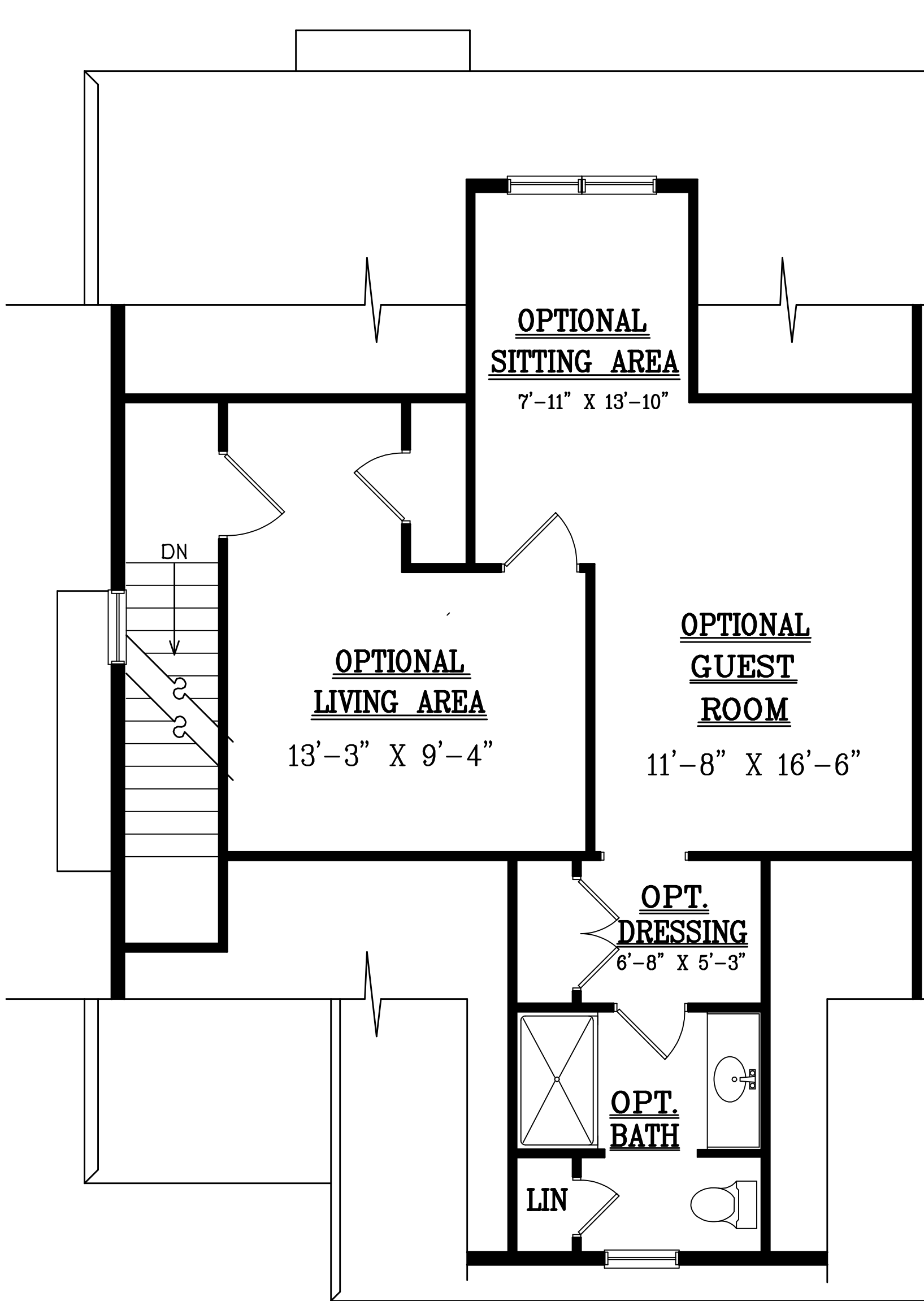
FLOOR PLANS AND DIMENSIONS ARE APPROXIMATE AND SUBJECT TO CHANGE WITHOUT NOTICE. FLOOR PLANS MAY ILLUSTRATE OPTIONAL FEATURES. WINDOW LOCATIONS AND STYLES VARY ACCORDING TO ELEVATION. PLEASE SEE SALES CONSULTANT FOR DETAILS.



## BEDROOM FLOOR PLAN – LOT #3

BEDROOM FLOOR : 1,186 SQ.FT.

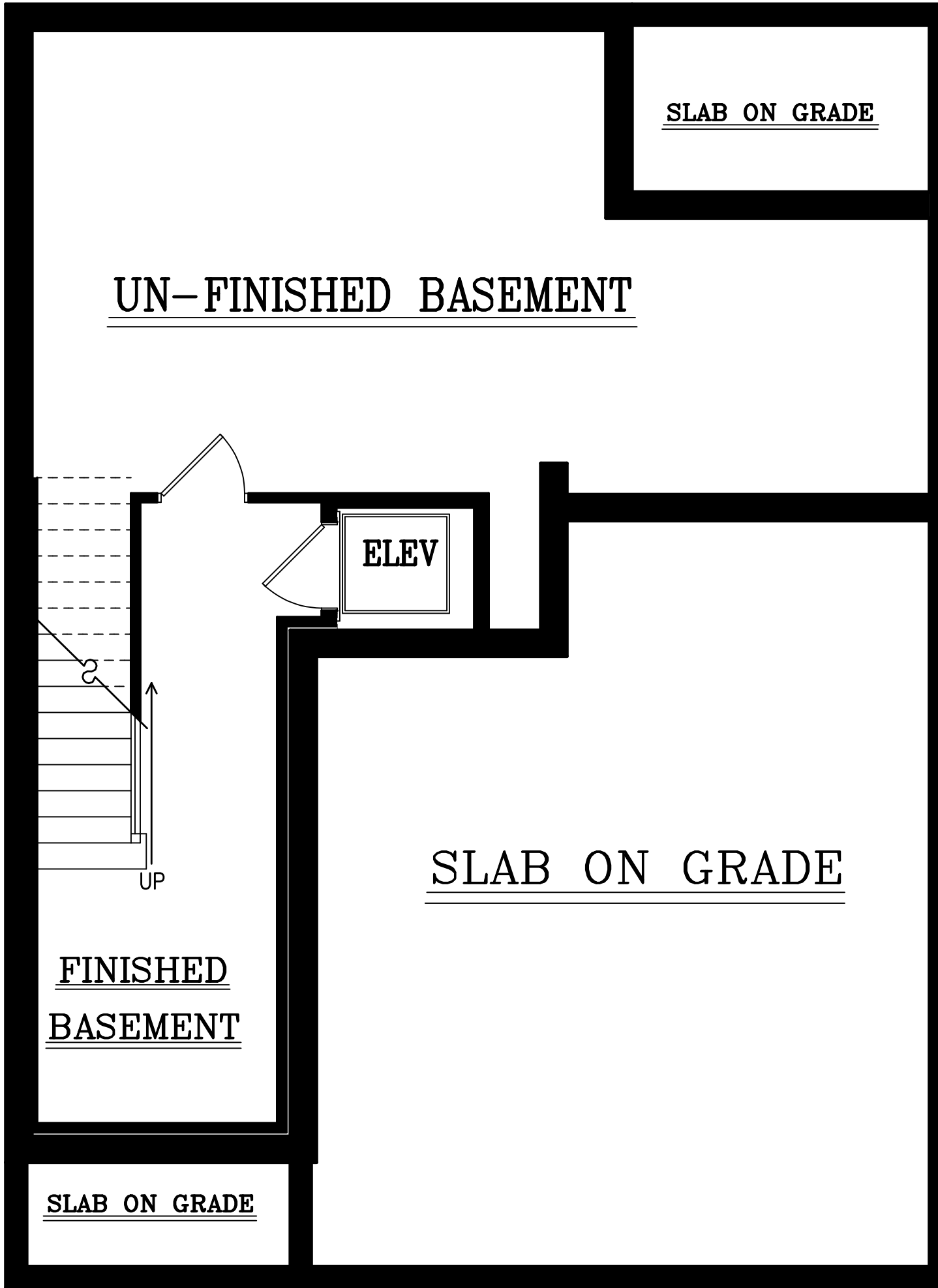
FLOOR PLANS AND DIMENSIONS ARE APPROXIMATE AND SUBJECT TO CHANGE WITHOUT NOTICE. FLOOR PLANS MAY ILLUSTRATE OPTIONAL FEATURES, WINDOW LOCATIONS AND STYLES VARY ACCORDING TO ELEVATION. PLEASE SEE SALES CONSULTANT FOR DETAILS.



## LOFT FLOOR PLAN – LOT #3

LOFT FLOOR : 681 SQ.FT.

FLOOR PLANS AND DIMENSIONS ARE APPROXIMATE AND SUBJECT TO CHANGE WITHOUT NOTICE. FLOOR PLANS MAY ILLUSTRATE OPTIONAL FEATURES. WINDOW LOCATIONS AND STYLES VARY ACCORDING TO ELEVATION. PLEASE SEE SALES CONSULTANT FOR DETAILS.



BASEMENT FLOOR PLAN – LOT #3

BASEMENT FLOOR : 579 SQ.FT.

FLOOR PLANS AND DIMENSIONS ARE APPROXIMATE AND SUBJECT TO CHANGE WITHOUT NOTICE. FLOOR PLANS MAY ILLUSTRATE OPTIONAL FEATURES. WINDOW LOCATIONS AND STYLES VARY ACCORDING TO ELEVATION. PLEASE SEE SALES CONSULTANT FOR DETAILS.