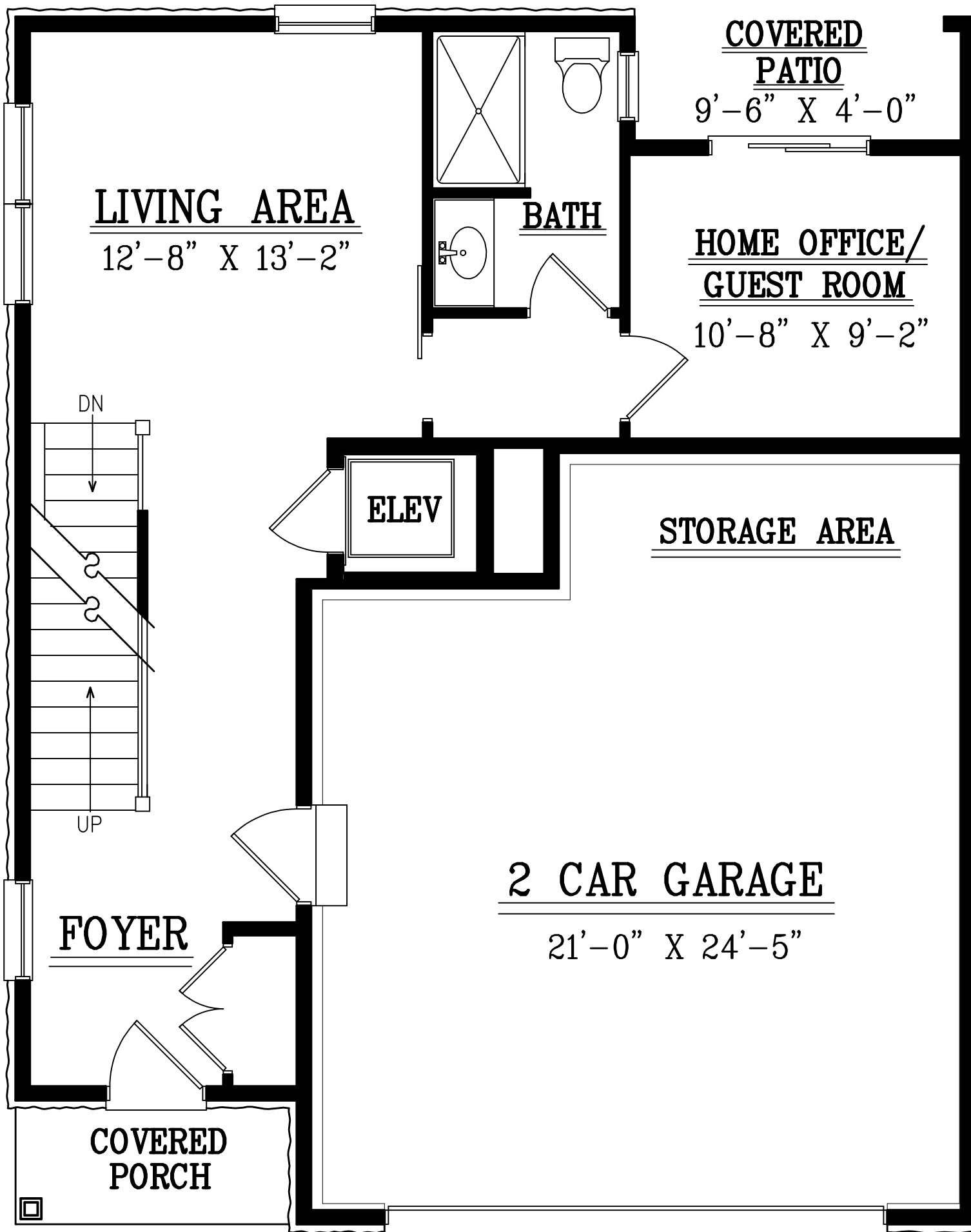




FRONT ELEVATION _ LOT #7



GRADE FLOOR PLAN – LOT #7

GRADE FLOOR : 626 SQ.FT.

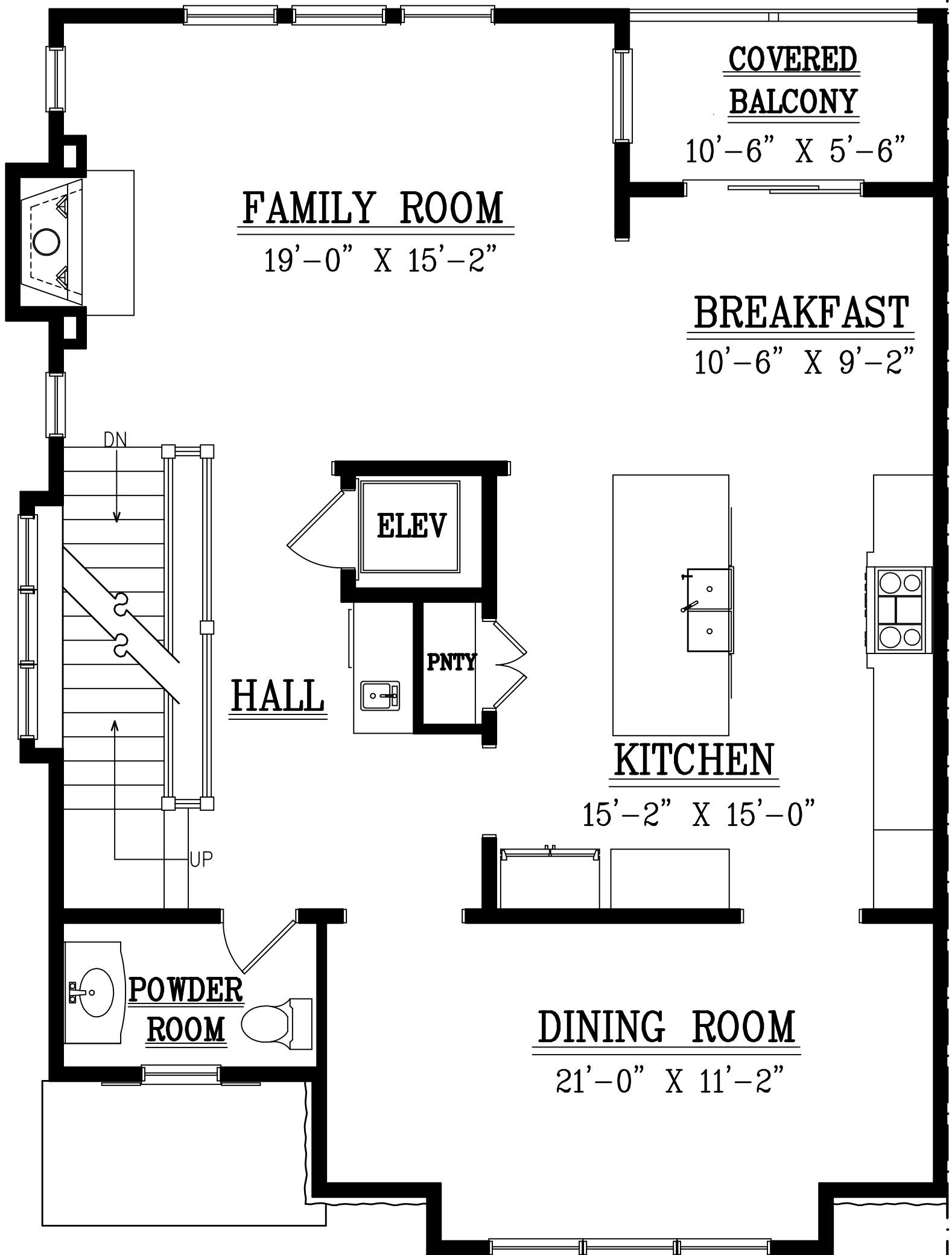
LIVING FLOOR : 1,132 SQ.FT.

BEDROOM FLOOR : 1,154 SQ.FT.

LOFT FLOOR : +630 SQ.FT.

TOTAL LIVING: 2,912 SQ.FT. TOTAL LIVING W/ LOFT: 3,542 SQ.FT.

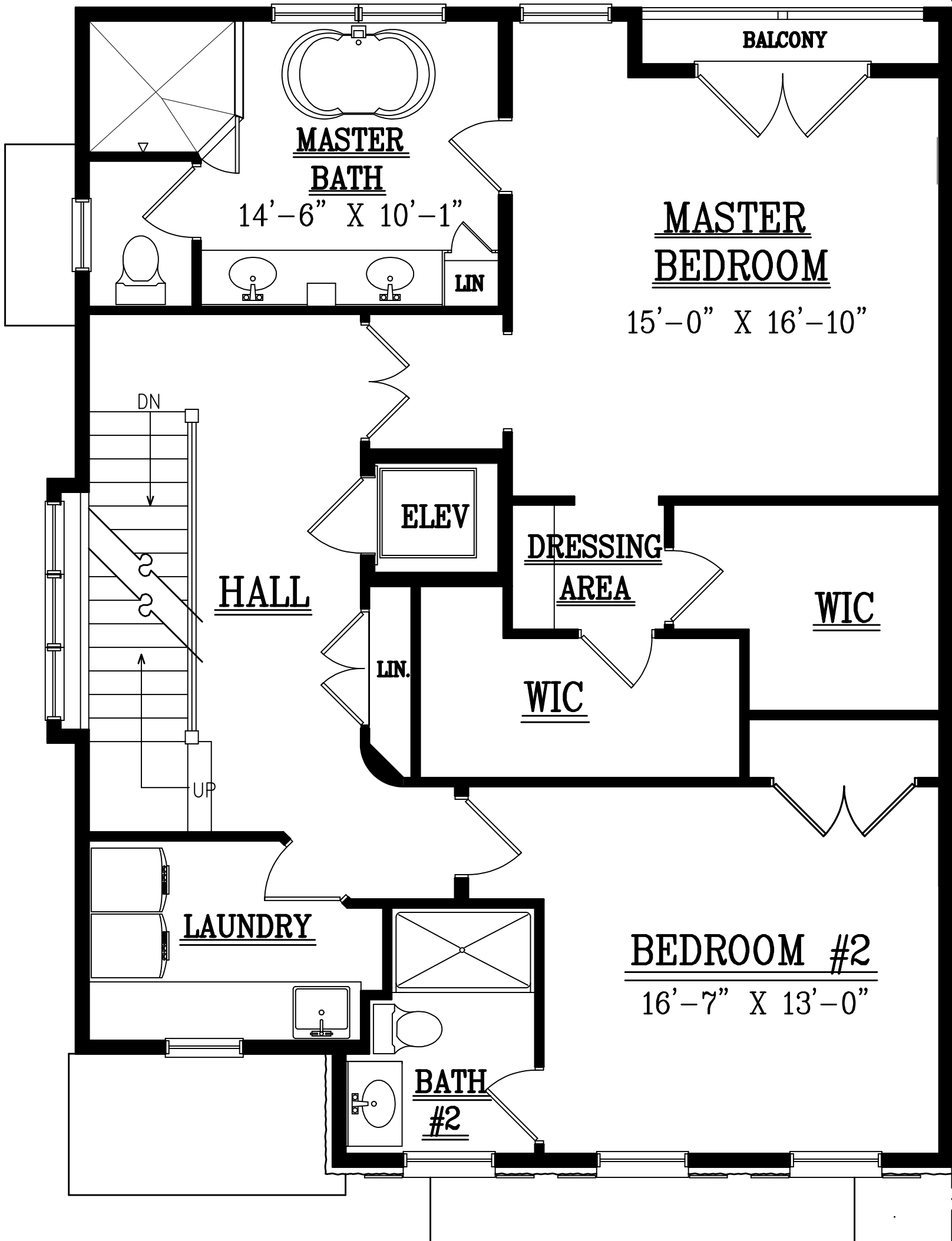
FLOOR PLANS AND DIMENSIONS ARE APPROXIMATE AND SUBJECT TO CHANGE WITHOUT NOTICE. FLOOR PLANS MAY ILLUSTRATE OPTIONAL FEATURES, WINDOW LOCATIONS AND STYLES VARY ACCORDING TO ELEVATION. PLEASE SEE SALES CONSULTANT FOR DETAILS.



LIVING FLOOR PLAN – LOT #7

LIVING FLOOR : 1,132 SQ.FT.

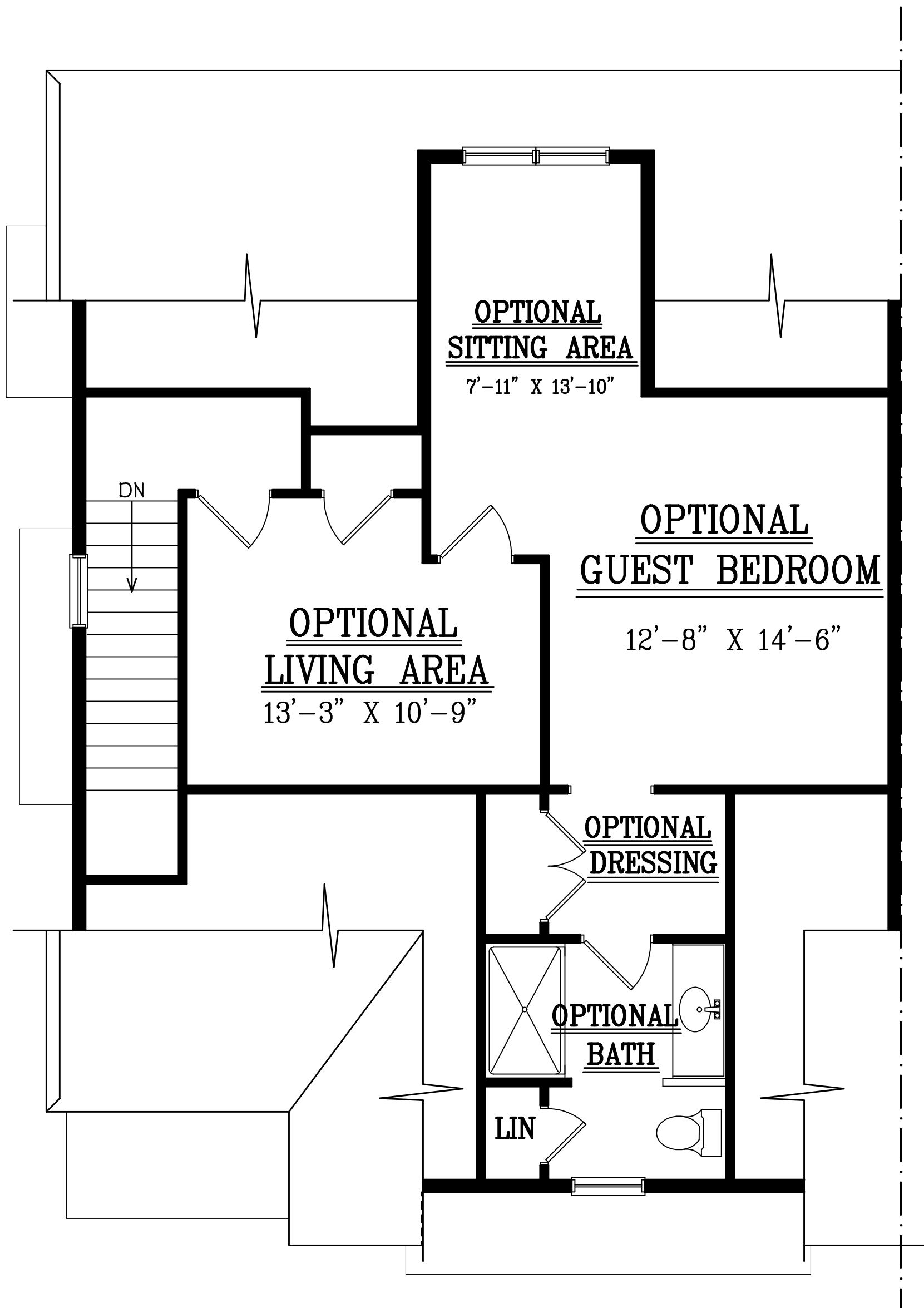
FLOOR PLANS AND DIMENSIONS ARE APPROXIMATE AND SUBJECT TO CHANGE WITHOUT NOTICE. FLOOR PLANS MAY ILLUSTRATE OPTIONAL FEATURES. WINDOW LOCATIONS AND STYLES VARY ACCORDING TO ELEVATION. PLEASE SEE SALES CONSULTANT FOR DETAILS.



BEDROOM FLOOR PLAN - LOT #7

BEDROOM FLOOR : 1,154 SQ.FT.

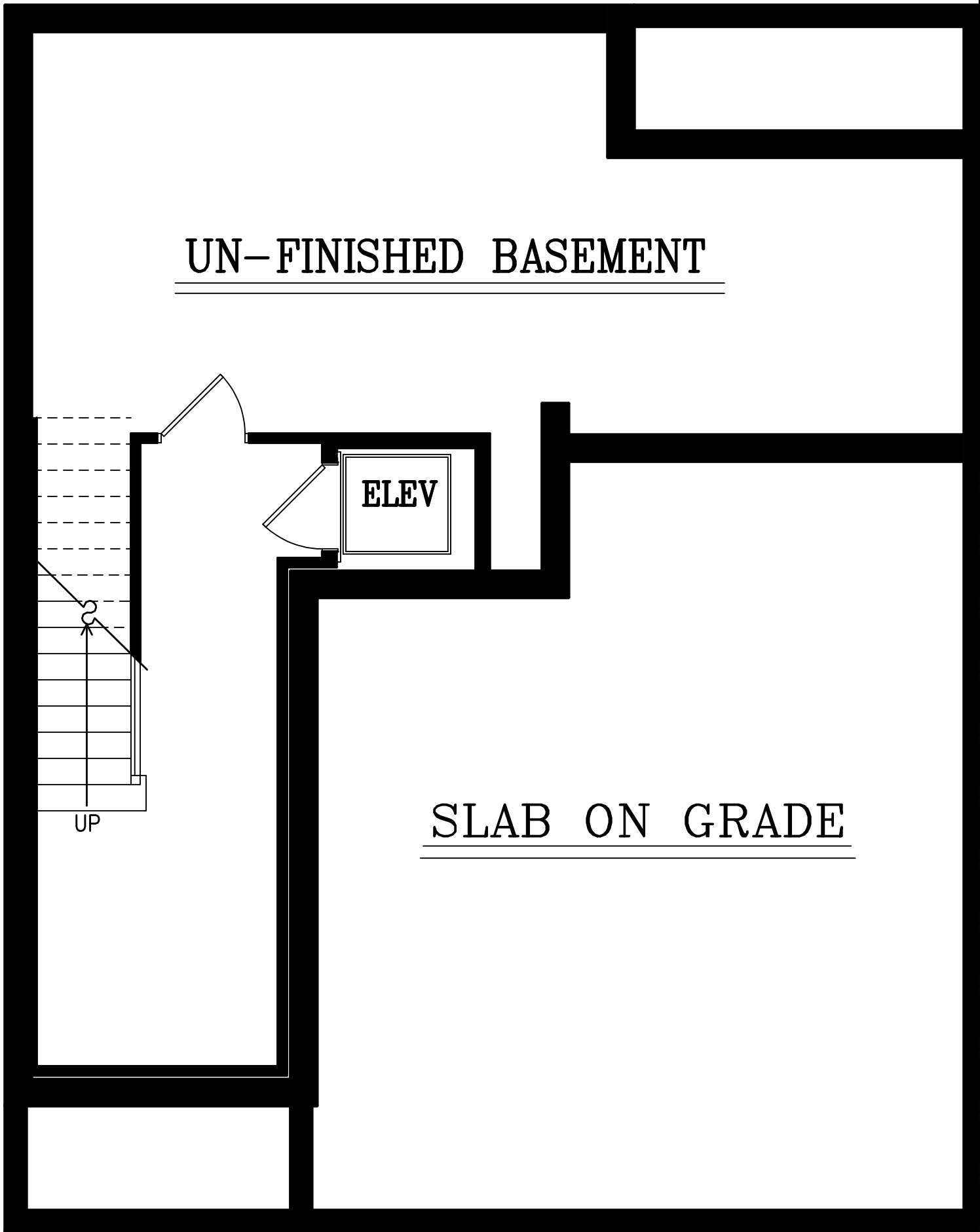
FLOOR PLANS AND DIMENSIONS ARE APPROXIMATE AND SUBJECT TO CHANGE WITHOUT NOTICE. FLOOR PLANS MAY ILLUSTRATE OPTIONAL FEATURES. WINDOW LOCATIONS AND STYLES VARY ACCORDING TO ELEVATION. PLEASE SEE SALES CONSULTANT FOR DETAILS.



LOFT FLOOR PLAN – LOT #7

LOFT FLOOR : 630 SQ.FT.

FLOOR PLANS AND DIMENSIONS ARE APPROXIMATE AND SUBJECT TO CHANGE WITHOUT NOTICE. FLOOR PLANS MAY ILLUSTRATE OPTIONAL FEATURES. WINDOW LOCATIONS AND STYLES VARY ACCORDING TO ELEVATION. PLEASE SEE SALES CONSULTANT FOR DETAILS.



BASEMENT FLOOR PLAN – LOT #7

BASEMENT FLOOR : 579 SQ.FT.

FLOOR PLANS AND DIMENSIONS ARE APPROXIMATE AND SUBJECT TO CHANGE WITHOUT NOTICE. FLOOR PLANS MAY ILLUSTRATE OPTIONAL FEATURES. WINDOW LOCATIONS AND STYLES VARY ACCORDING TO ELEVATION. PLEASE SEE SALES CONSULTANT FOR DETAILS.